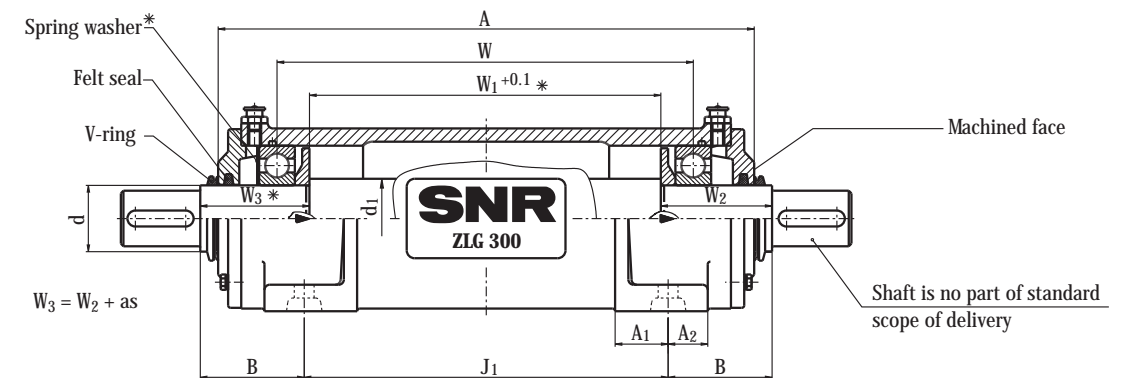
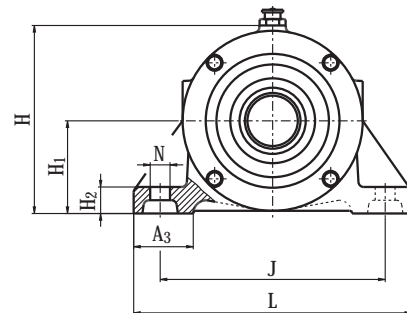


Double Bearing Housings ZLG 300



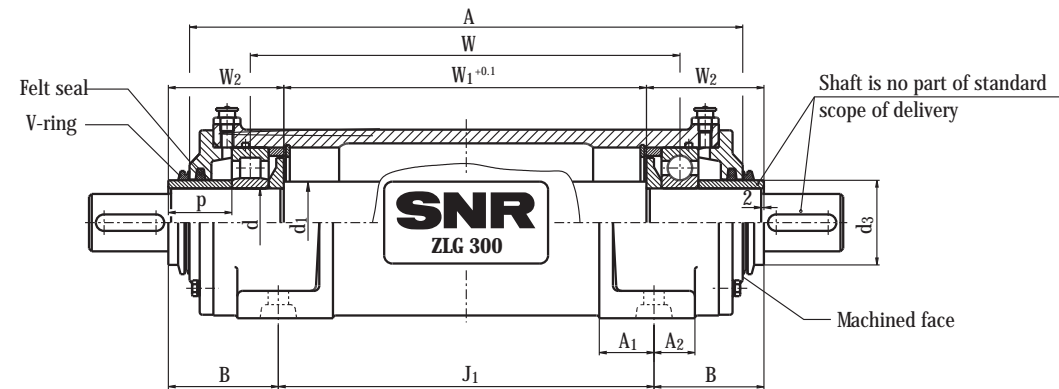
* The spring washer may not be mounted for alternating axial loads. Dimension W1 is then increased by dimension "as", W3 is then equal to W2.

Design AA

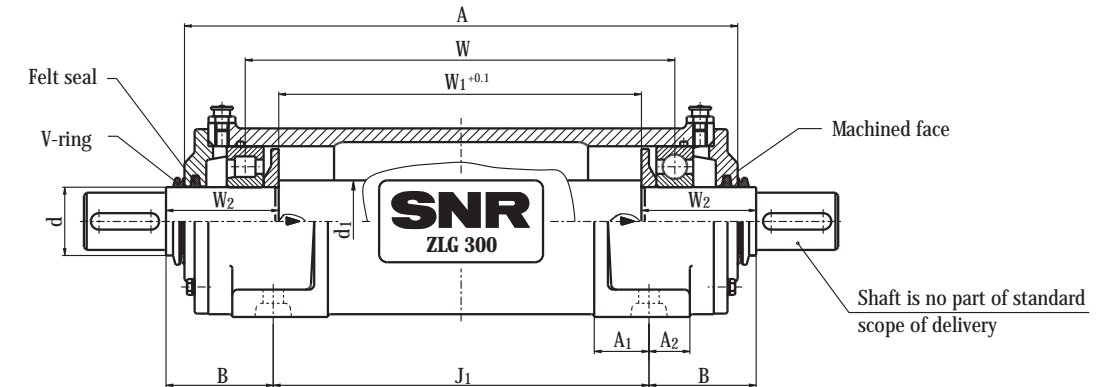
If you notify us the dimensions of the mating structure for your design, we will be glad to supply you with double or triple bearing housings fully mounted, pre-lubricated and with a corresponding shaft. That means that you have the advantage of getting the complete unit from one supplier only.

shaft d	dimensions [mm]																mounting parts								unit designation	housing weight approx. kg		
	d ₁	bearing code	housing number	A	A ₁	A ₂	A ₃	H	H ₁	H ₂	J	J ₁	L	N	W	W ₁	W ₂	B	d ₃	p	as	bearing 1	bearing 2	felt ring			V-ring	spring washer
30	40	ZLG 306	235	30	20	40	100	50	16	130	150	170	15	173,0	140,0	57,0	53,0	-	-	1,5		6306 C3	6306 C3	FI 7	V-30S	ASG 6306	ZLG 306 AA	8
														174,5	141,5			35	31	-	NU 306 EG15 C3		FI 8	V-35S	-	ZLG 306 AB		
														174,5	140,5			-	-	-	NJ 306 EG15 C3		FI 7	V-30S	-	ZLG 306 AC		
35	45	ZLG 307	275	30	20	40	117	60	16	150	175	190	15	197,0	160,0	66,5	60,0	-	-	1,5		6307 C3	6307 C3	FI 8	V-35S	ASG 6307	ZLG 307 AA	10
														198,5	161,5	69,0	62,5	40	40	-	NU 307 EG15 C3		FI 9	V-40S	-	ZLG 307 AB		
														198,5	160,5	66,5	60,0	-	-	-	NJ 307 EG15 C3		FI 8	V-35S	-	ZLG 307 AC		
40	50	ZLG 308	330	36	26	40	121	60	18	150	225	190	15	257,0	214,0	69,5	65,0	-	-	1,5		6308 C3	6308 C3	FI 9	V-40S	ASG 6308	ZLG 308 AA	12
														258,5	215,5			50	36,5	-	NU 308 EG15 C3		FI 11	V-50S	-	ZLG 308 AB		
														258,5	214,5			-	-	-	NJ 308 EG15 C3		FI 9	V-40S	-	ZLG 308 AC		
45	55	ZLG 309	370	36	26	45	139	70	20	170	250	210	15	280,5	235,5	78,5	72,5	-	-	2,0		6309 C3	6309 C3	FI 10	V-45S	ASG 6309	ZLG 309 AA	16
														282,5	237,5			55	43,5	-	NU 309 EG15 C3		FI 12	V-55S	-	ZLG 309 AB		
														282,5	236,5			-	-	-	NJ 309 EG15 C3		FI 10	V-45S	-	ZLG 309 AC		
50	60	ZLG 310	405	40	30	45	142	70	20	170	275	210	15	314,5	265,5	81,0	77,5	-	-	2,0		6310 C3	6310 C3	FI 11	V-50S	ASG 6310	ZLG 310 AA	19
														316,5	267,5			60	43	-	NU 310 EG15 C3		FI 13	V-60S	-	ZLG 310 AB		
														316,5	266,5			-	-	-	NJ 310 EG15 C3		FI 11	V-50S	-	ZLG 310 AC		
55	65	ZLG 311	433	40	30	60	158	80	23	210	300	270	20	336,5	287,5	84,0	79,0	-	-	2,0		6311 C3	6311 C3	FI 12	V-55S	ASG 6311	ZLG 311 AA	25
														338,5	289,5			65	45	-	NU 311 EG15 C3		FI 15	V-65S	-	ZLG 311 AB		
														338,5	288,0			-	-	-	NJ 311 EG15 C3		FI 12	V-55S	-	ZLG 311 AC		
60	70	ZLG 312	479	40	30	60	162	80	23	210	340	270	20	384,0	333,0	84,0	81,5	-	-	1,5		6312 C3	6312 C3	FI 13	V-60S	ASG 6312	ZLG 312 AA	30
														385,5	334,5	87,5	85,0	70	46,5	-	NU 312 EG15 C3		FI 16	V-70S	-	ZLG 312 AB		
														385,5	333,0	84,0	81,5	-	-	-	NJ 312 EG15 C3		FI 13	V-60S	-	ZLG 312 AC		
65	75	ZLG 313	503	45	35	60	187	95	25	230	360	290	20	402,0	348,0	88,0	83,5	-	-	2,5		6313 C3	6313 C3	FI 15	V-65S	ASG 6313	ZLG 313 AA	33
														404,5	350,5	91,5	87,0	75	48	-	NU 313 EG15 C3		FI 17	V-75S	-	ZLG 313 AB		
														404,5	349,0	88,0	83,5	-	-	-	NJ 313 EG15 C3		FI 15	V-65S	-	ZLG 313 AC		

Double Bearing Housings ZLG 300



Design AB



Design AC

If you notify us the dimensions of the mating structure for your design, we will be glad to supply you with double or triple bearing housings fully mounted, pre-lubricated and with a corresponding shaft. That means that you have the advantage of getting the complete unit from one supplier only.

shaft d	dimensions [mm]																	mounting parts							unit designation	housing weight approx. kg		
	d ₁	bearing code	housing number	A	A ₁	A ₂	A ₃	H	H ₁	H ₂	J	J ₁	L	N	W	W ₁	W ₂	B	d ₃	p	as	bearing 1	bearing 2	felt ring			V-ring	spring washer
70	80	ZLG 314	534	45	35	60	190	95	25	230	380	290	20	421,0	364,0	99,0	92,5	-	-	2,5		6314 C3	6314 C3	FI 16	V-70S	ASG 6314	ZLG 314 AA	37
														423,5	366,5		80	53	-	NU 314 EG15 C3		FI 18	V-80S	-	ZLG 314 AB			
														423,5	365,0		-	-	-	NJ 314 EG15 C3		FI 16	V-70S	-	ZLG 314 AC			
75	90	ZLG 315	559	45	35	70	200	100	28	260	400	330	20	450,0	389,0	99,0	95,0	-	-	2,5		6315 C3	6315 C3	FI 17	V-75S	ASG 6315	ZLG 315 AA	47
														452,5	391,5		90	50	-	NU 315 EG15 C3		FI 20	V-90S	-	ZLG 315 AB			
														452,5	390,0		-	-	-	NJ 315 EG15 C3		FI 17	V-75S	-	ZLG 315 AC			
80	95	ZLG 316	585	50	40	70	220	112	30	260	420	330	20	468,0	405,0	104,0	98,0	-	-	2,5		6316 C3	6316 C3	FI 18	V-80S	ASG 6316	ZLG 316 AA	56
														470,5	407,5		95	53	-	NU 316 EG15 C3		FI 21	V-95S	-	ZLG 316 AB			
														470,5	406,0		-	-	-	NJ 316 EG15 C3		FI 18	V-80S	-	ZLG 316 AC			
85	100	ZLG 317	593	50	40	70	225	112	30	290	440	350	20	478,0	415,0	103,0	92,0	-	-	2,5		6317 C3	6317 C3	FI 19	V-85S	ASG 6317	ZLG 317 AA	64
														480,5	417,5		100	51	-	NU 317 EG15 C3		FI 22	V-100S	-	ZLG 317 AB			
														480,5	416,0		-	-	-	NJ 317 EG15 C3		FI 19	V-85S	-	ZLG 317 AC			
90	105	ZLG 318	605	55	45	70	230	112	30	290	460	350	20	483,5	418,5	107,0	88,0	-	-	3,0		6318 C3	6318 C3	FI 20	V-90S	ASG 6318	ZLG 318 AA	71
														486,5	421,5	109,0	90,0	110	55	-	NU 318 EG15 C3		FI 24	V-110S	-	ZLG 318 AB		
														486,5	420,0	107,0	88,0	-	-	-	NJ 318 EG15 C3		FI 20	V-90S	-	ZLG 318 AC		
95	110	ZLG 319	633	60	50	90	248	125	35	320	480	400	24	508,5	440,5	110,5	92,0	-	-	3,0		6319 C3	6319 C3	FI 21	V-95S	ASG 6319	ZLG 319 AA	82
														511,5	443,5	112,5	94,0	110	56	-	NU 319 EG15 C3		FI 24	V-110S	-	ZLG 319 AB		
														511,5	442,0	110,5	92,0	-	-	-	NJ 319 EG15 C3		FI 21	V-95S	-	ZLG 319 AC		
100	115	ZLG 320	673	60	50	80	264	130	40	320	500	400	24	533,0	463,0	118,5	102,0	-	-	3,5		6320 C3	6320 C3	FI 22	V-100S	ASG 6320	ZLG 320 AA	93
														536,5	466,5	120,5	104,0	120	62	-	NU 320 EG15 C3		FI 27	V-120S	-	ZLG 320 AB		
														536,5	465,0	118,5	102,0	-	-	-	NJ 320 EG15 C3		FI 22	V-100S	-	ZLG 320 AC		
110	130	ZLG 322	678	70	60	100	296	150	40	380	520	450	26	577,0	504,0	102,5	96,5	-	-	3,5		6322 C3	6322 C3	FI 24	V-110S	ASG 6322	ZLG 322 AA	110
														580,5	507,5		130	41	-	NU 322 EG15 C3		FI 29	V-130S	-	ZLG 322 AB			
														580,5	506,0		-	-	-	NJ 322 EG15 C3		FI 24	V-110S	-	ZLG 322 AC			
120	140	ZLG 324	705	78	60	115	320	160	40	410	540	500	35	599,5	521,5	107,5	100,0	-	-	3,0		6324 C3	6324 C3	FI 27	V-120S	ASG 6324	ZLG 324 AA	150
														602,5	524,5		140	41	-	NU 324 EG15 C3		FI 32	V-140S	-	ZLG 324 AB			
														602,5	523,0		-	-	-	NJ 324 EG15 C3		FI 27	V-120S	-	ZLG 324 AC			